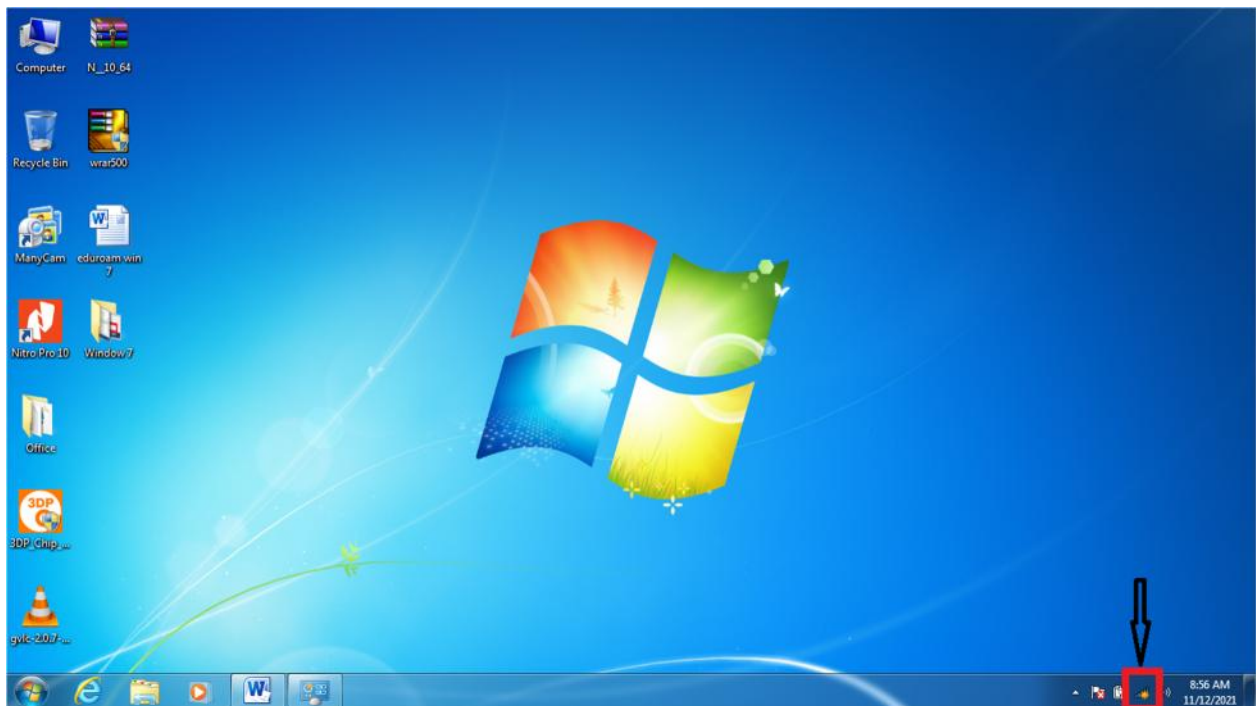
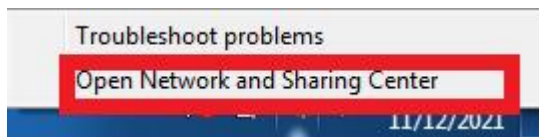


# “Eduroam” Configuration guide for Windows 7

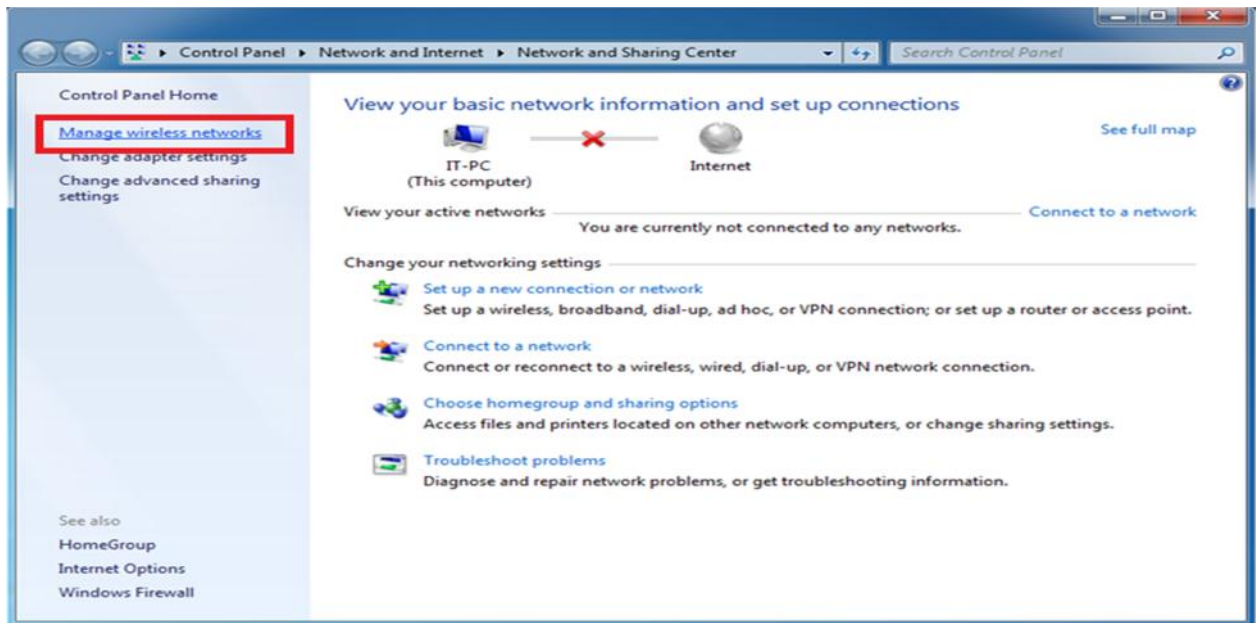
1. Right click on WiFi icon in right down corner of your task bar.



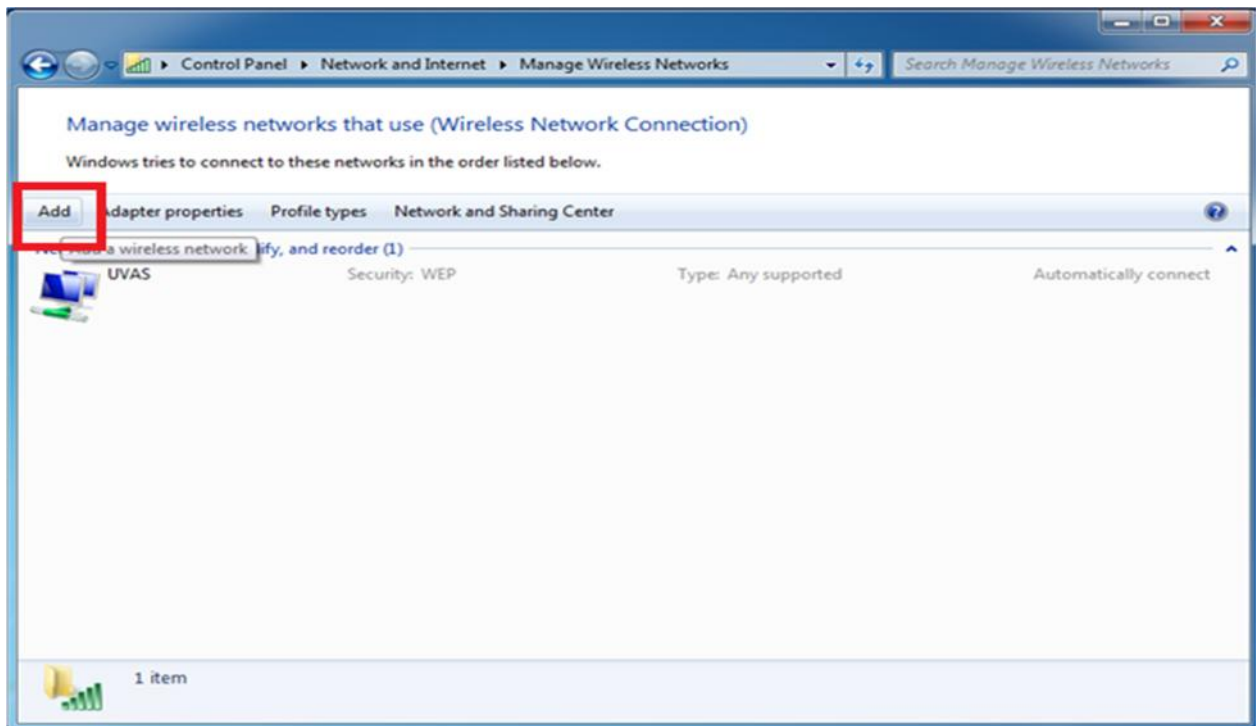
2. Click on “Open Network and Sharing”



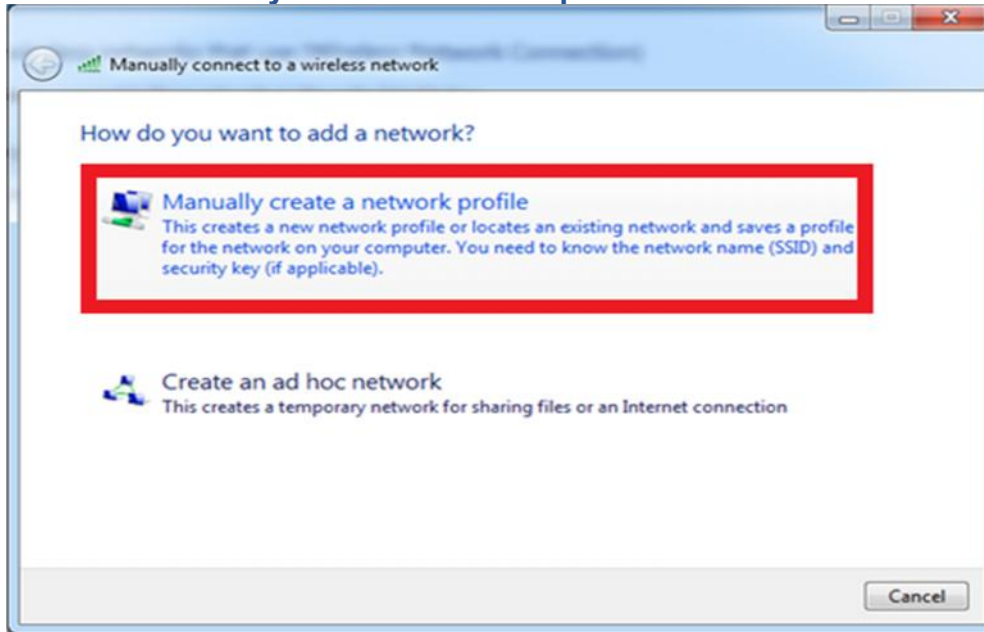
### 3. Click on “Manage Wireless Networks”



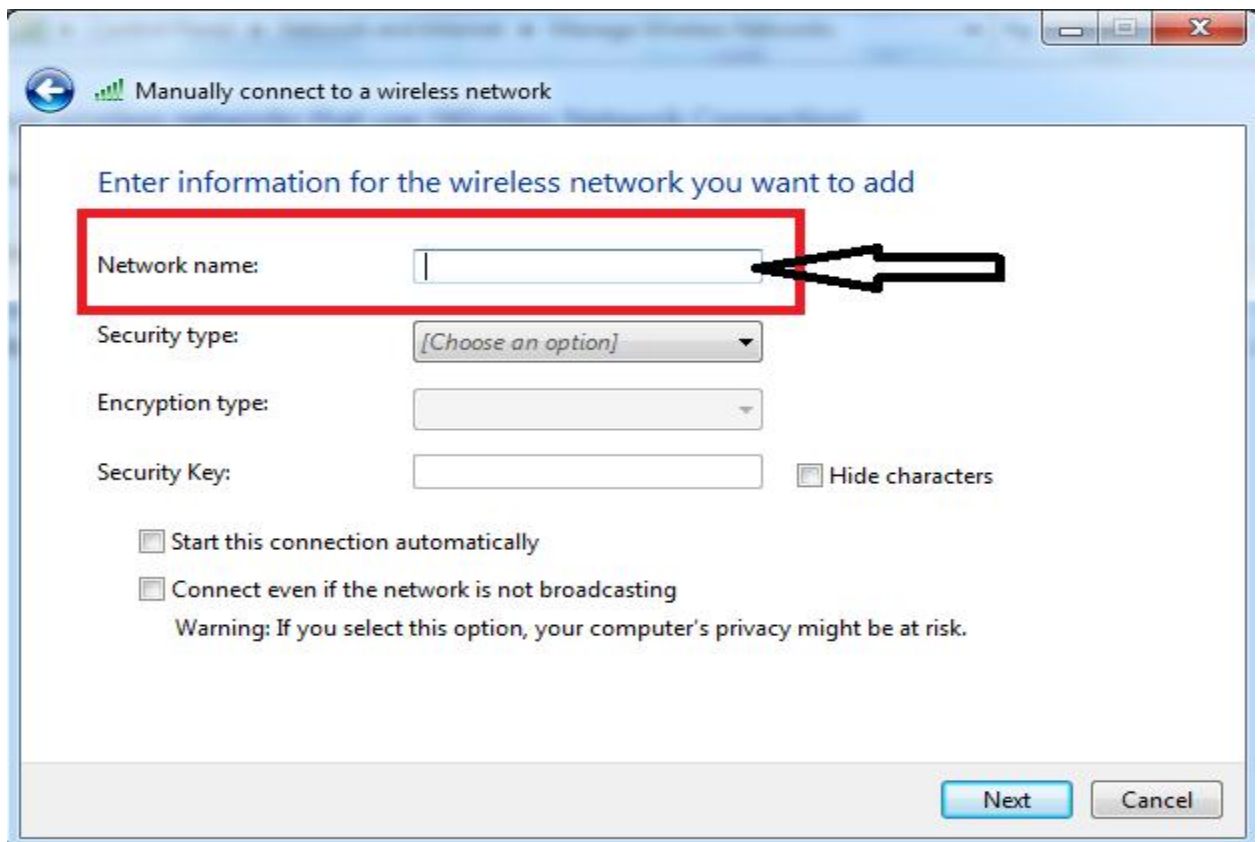
### 4. Click on “Add”

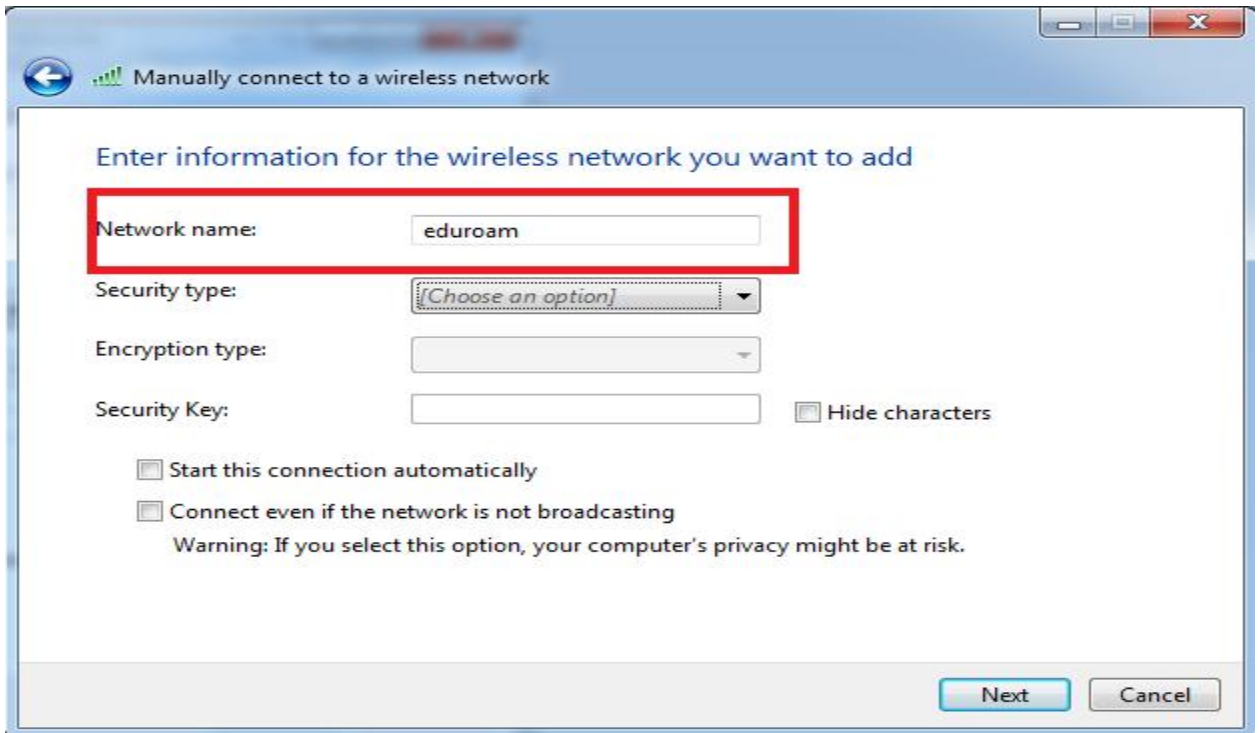


5. Choose “Manually Create a network profile”

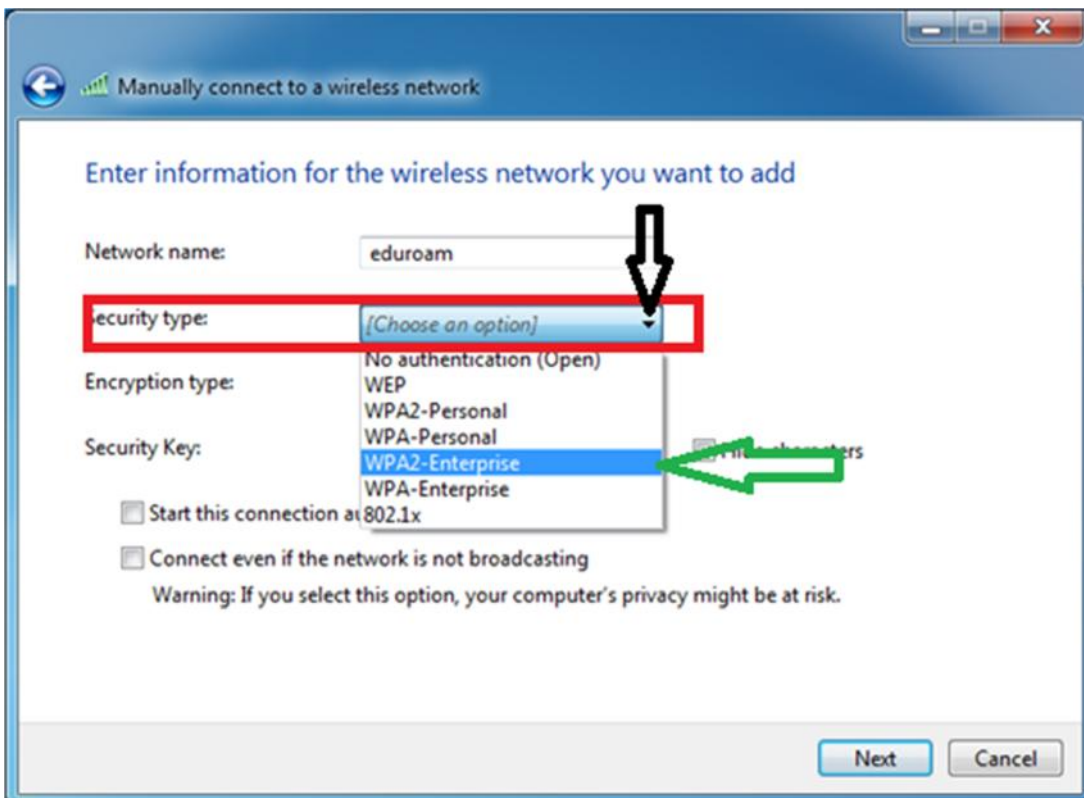


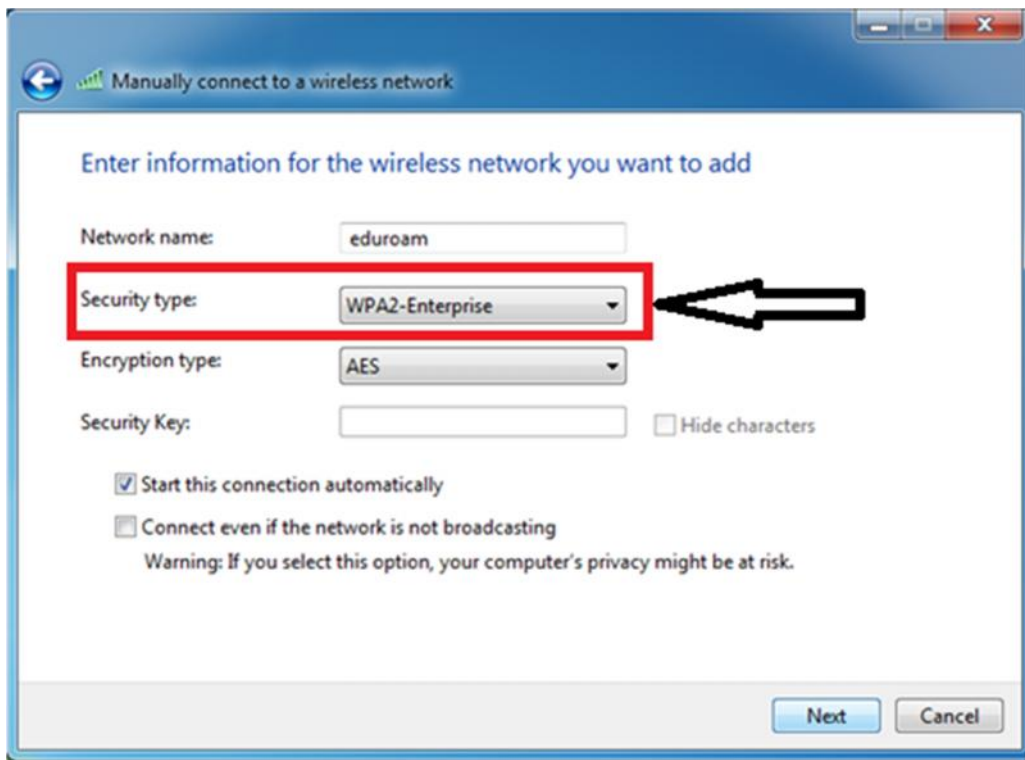
6. On network name write “eduroam”



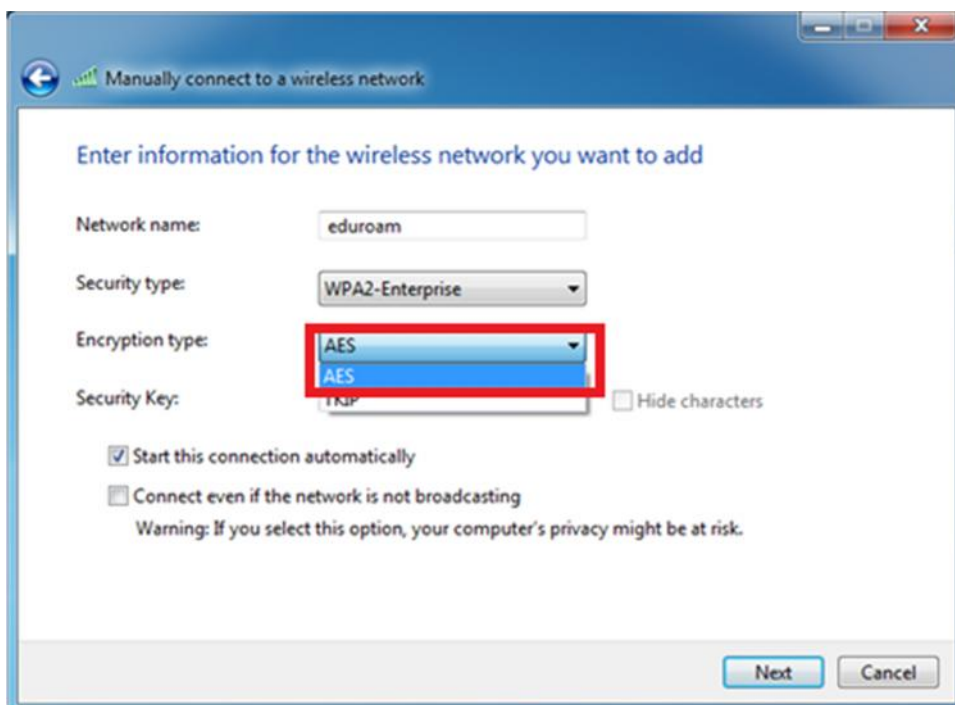


7. In Security type field select "WPA2-Enterprise"

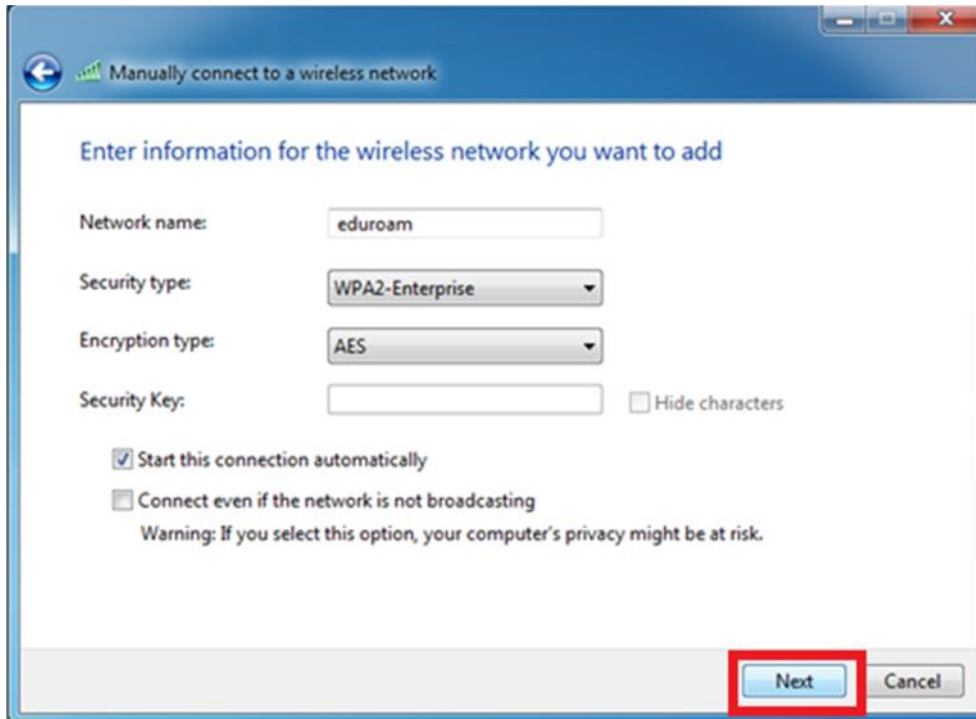




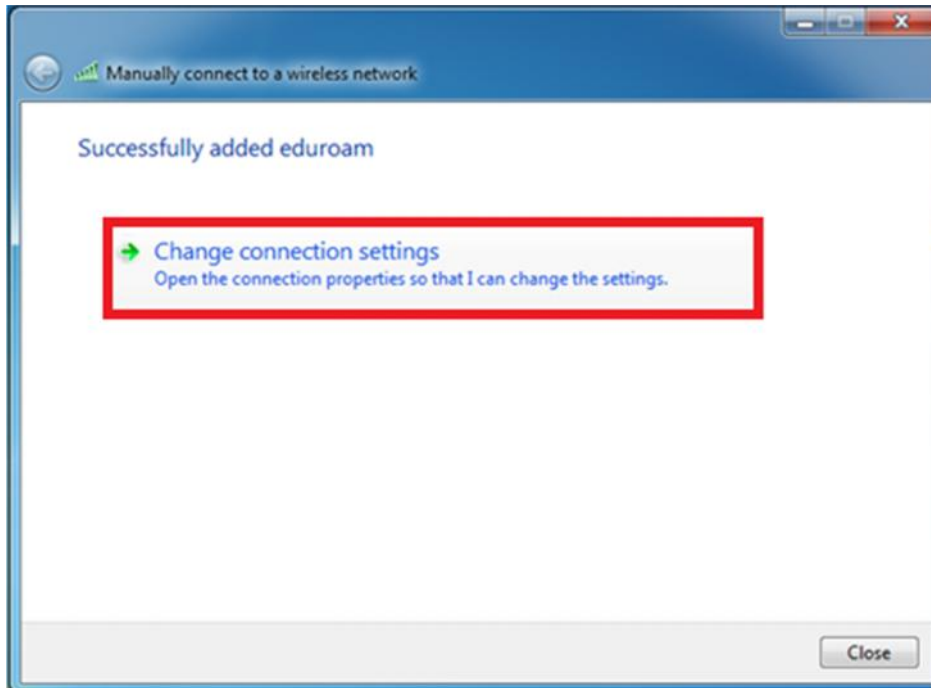
## 8. Encryption Type select "AES"



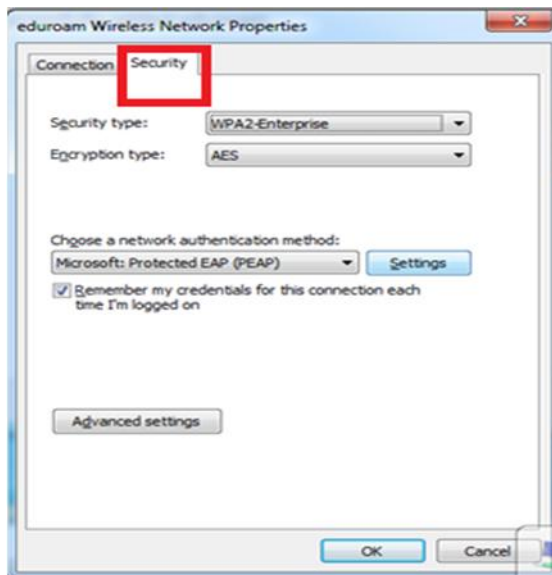
9. Leave Security Key “Blank” and click on “Next”



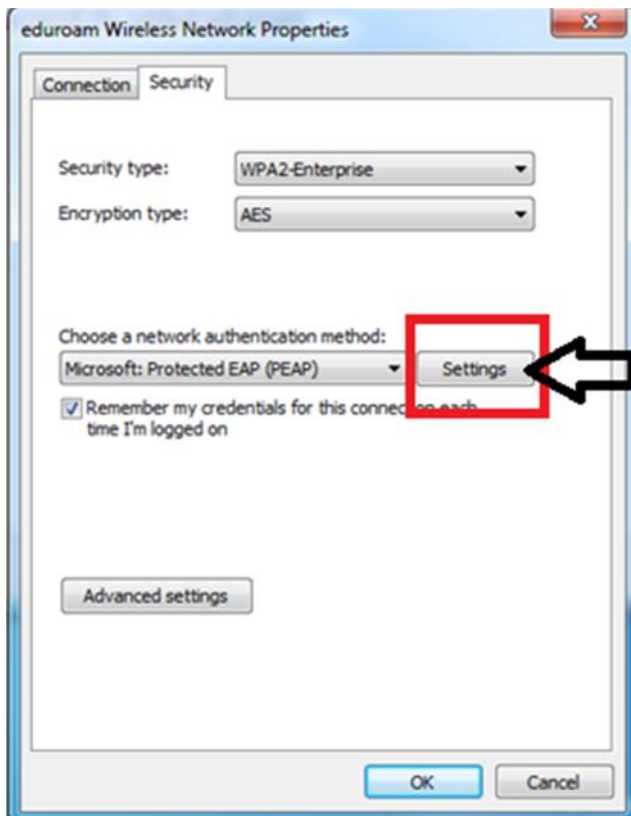
10. Click on “Change Connection Setting”



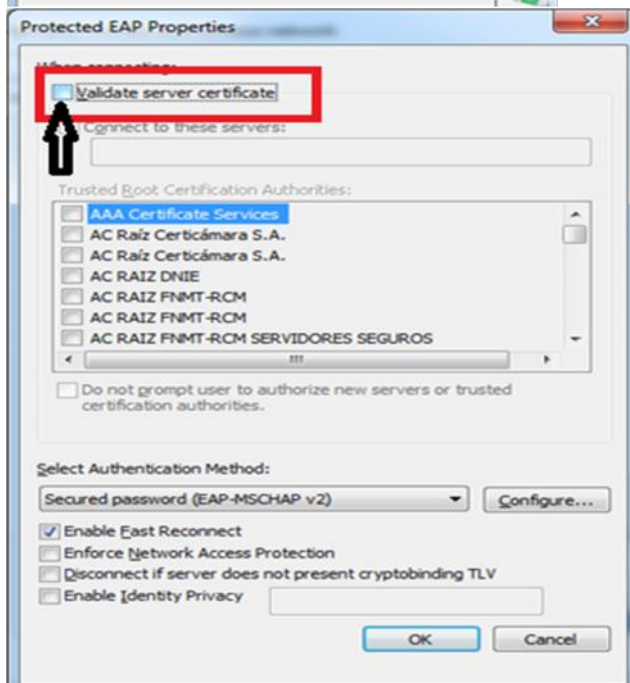
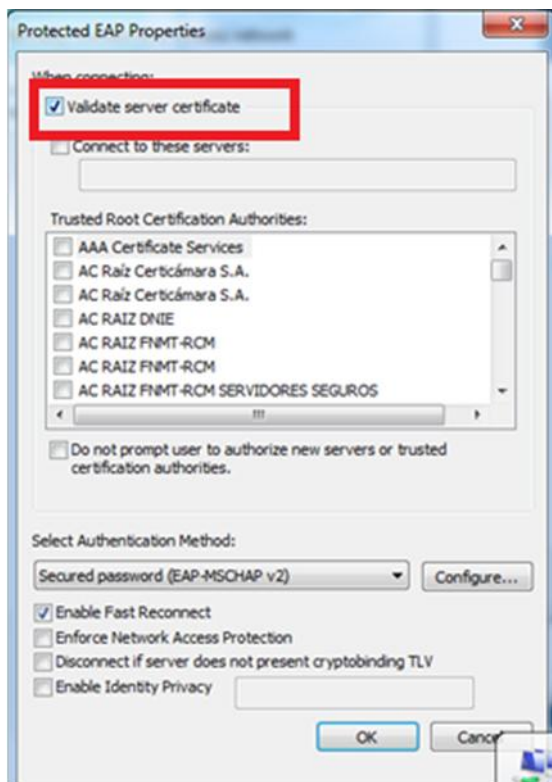
11. Select “Security” tab on top on new window



12. Here Click on “Setting” in front of Network Authentication Method: Microsoft: Protected EAP (PEAP)

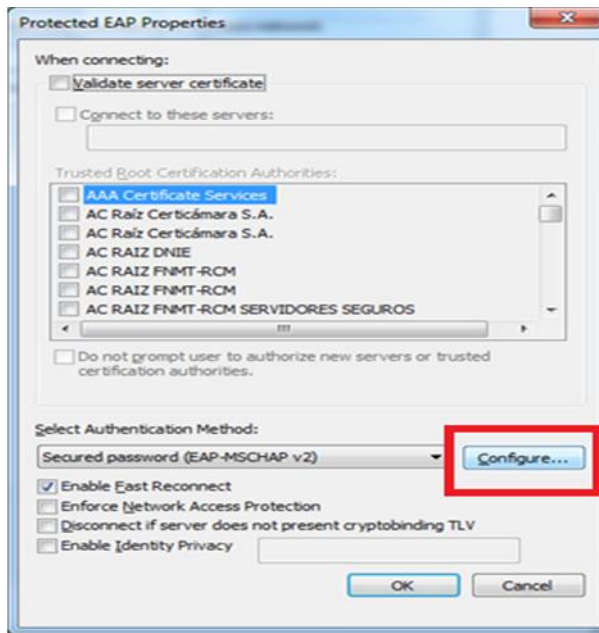


### 13. Uncheck 'Validate server certificate'

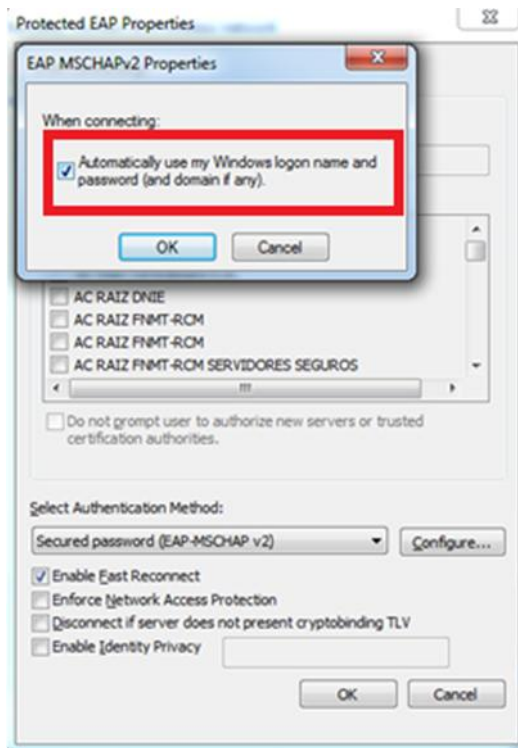


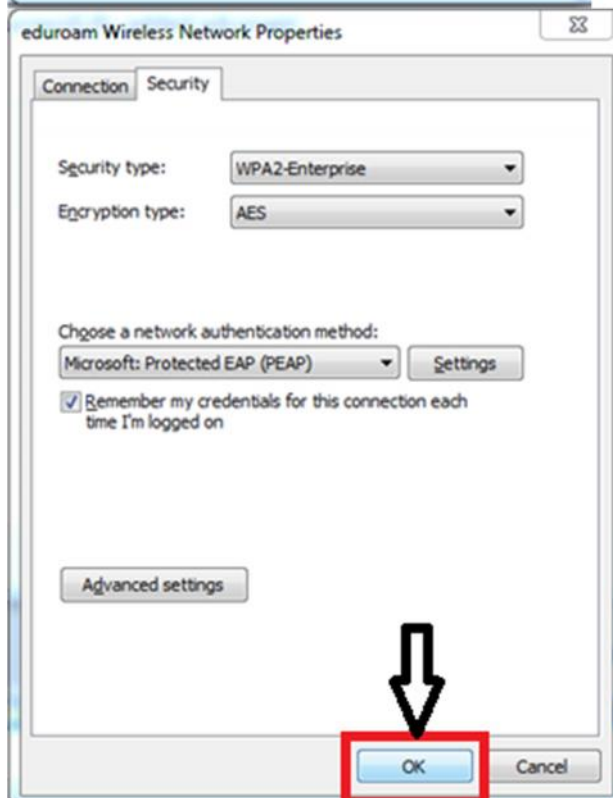
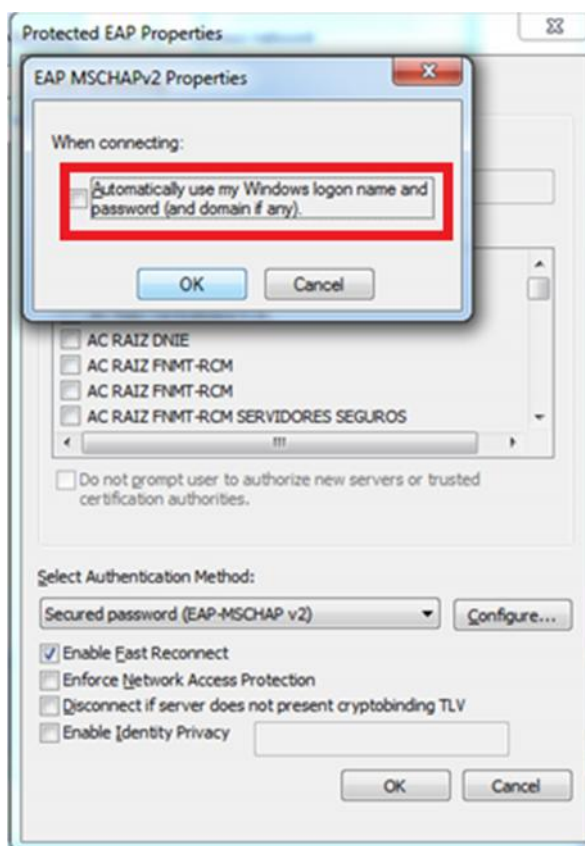


#### 14. Click on 'Configure'

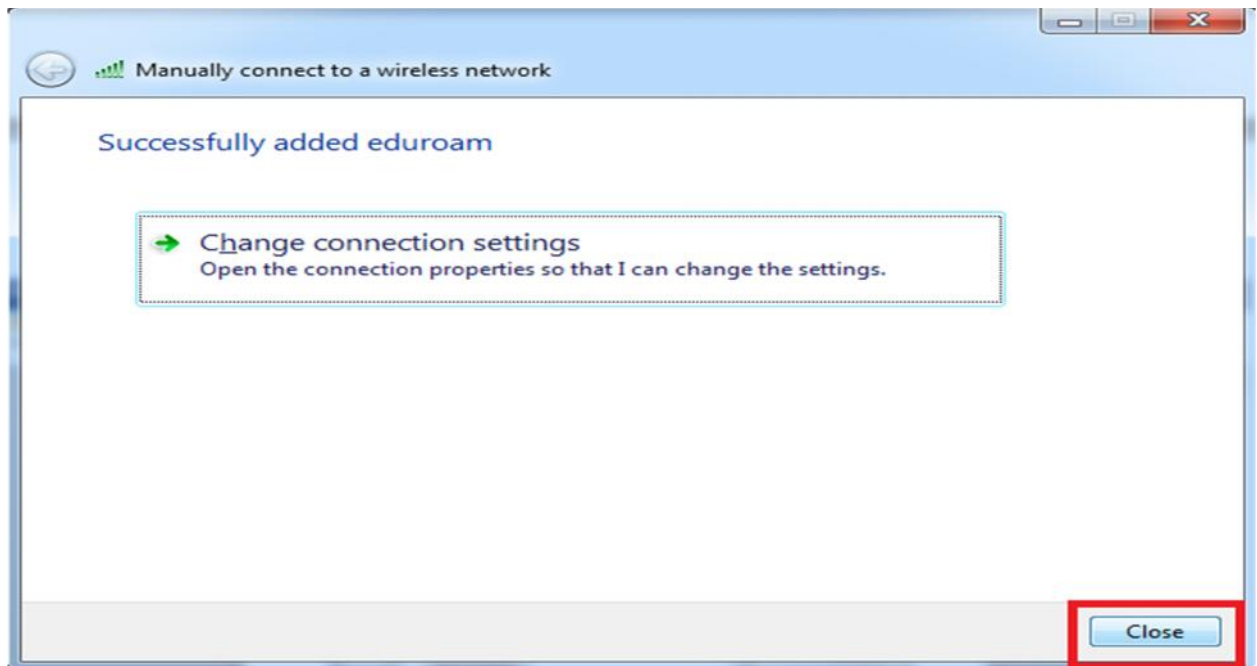


#### 15. Uncheck Automatically use my windows logon name and password (and domain if any) and press OK



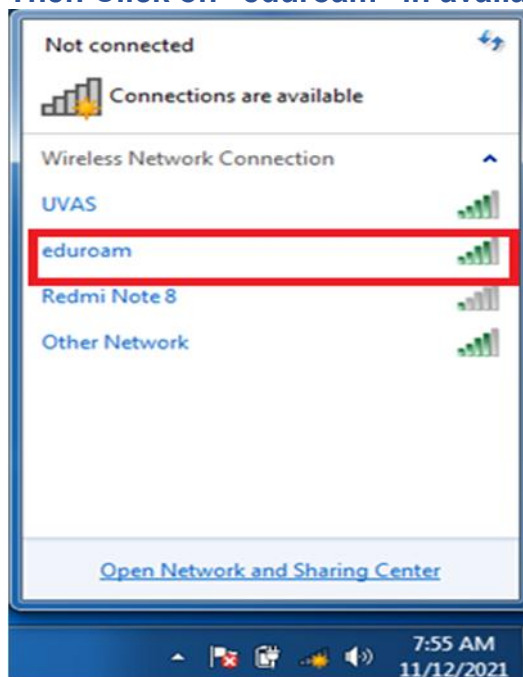


16. Press “Ok” on all windows and “Close” the Manually connect to a wireless network



17. Disconnect all Networks

18. Then Click on “eduroam” in available networks

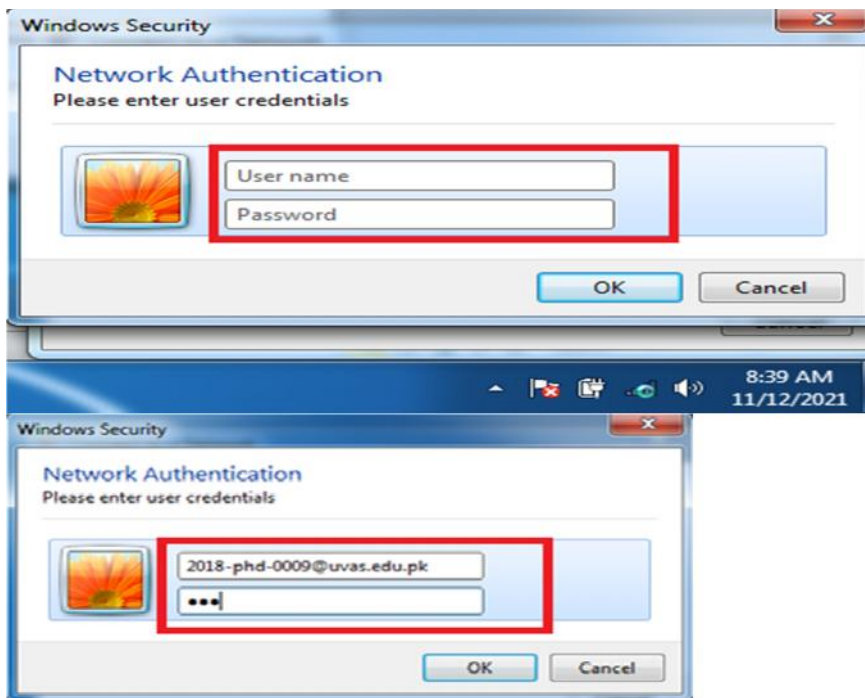


19. Here select “Connect automatically” and click on “Connect” button



20. Enter your Institute ID and Password sent to your University Mail account and click “OK”

21. **NOTE:** Your user ID must be appended with @uvas.edu.pk (e.g. [test@uvas.edu.pk](mailto:test@uvas.edu.pk))



22. Finally your “eduroam” WiFi will be connected.

